

Femina Armchair

SKU: MUMOA-402-Femina Armchair



PRODUCT FEATURES

Frame in solid wood.
Foam in 100% PU with BS standard fire specifications.
Foam in American Standard CAL 117 for the USA.
Upholstery with upholstery straps.
Fire retardant interlining is available on request.
Handmade in Porto.

AS PICTURED

UPHOLSTERY: Cotton Velvet, ref. Emerald, CV09
LEGS: Cotton Velvet, ref. Emerald, CV09
FEET COVERS: Polished brass

PRODUCT OPTIONS

UPHOLSTERY
Available in all fabrics except Wild Silk. Available in client's own material.

LEG FINISHES

Available upholstered, Rosewood, Ebony or Walnut veneer, Wengé stain or lacquer in all RAL colours, in matt or gloss.

FEET COVERS

Brass, Nickel or Copper in Polished or Brushed finishing

FINISHES AVAILABLE ON REQUEST

Legs: Gold, Silver or Copper leaf.

CLIENT'S OWN MATERIAL (COM) REQUIREMENTS

FABRIC

3,2mt | 126"
Based on plain fabric, standard width 1,40 mts | 55"

LEATHER

50 square feet

TECHNICAL DETAILS

VOLUME

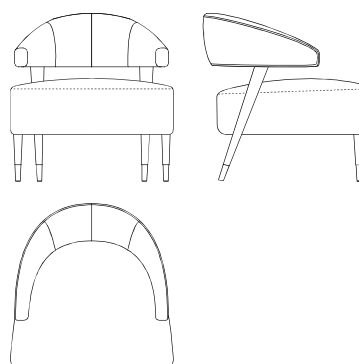
0,52 m3 | 18,4 cubic feet (packed)

WEIGHT

11 kg | 24,5 lbs
20 kg | 44 lbs (packed in reinforced carton case)

DIMENSIONS

W: 70 cm | 27,6"
D: 71 cm | 27,9"
H: 72 cm | 28,3"
SH: 44 cm | 17,3"
AH: 60 cm | 23,6"



**PROJECT VELVET WATER
REPELLENT/PROJECT FR**

Composition: 100%PL

Width: 140 (+/- 2cm)

Weight: 420 gr/ml

Light fastness: 4

Pilling: 4/5

Martindale: 100,000 CC

Shrinkage: +/-2%

Obs.: FR treatment available upon request



01 Ivory



02 Sand



03 Beige



04 Taupe



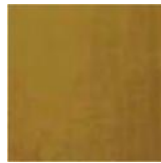
05 Chocolate



06 Curry



07 Pure Yellow



08 Golden Olive



09 Dark Green



10 Storm Blue



11 Aqua Marine



12 Capri Blue



13 Light Gray



14 Lavender



15 Ash Rose



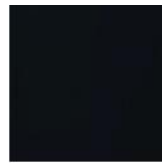
16 Deep Bordeaux



17 Rubi



18 Black



19 Navy Blue



20 Horizon Blue



21 Steel Gray



22 Dark Taupe



23 Ash Gray

VELLANA DOUBLE WIDTH VELVET

Composition: 100% PL

Width: 300 cm

Weight: 1230 gr/ml

Martindale: 150.000 CC

Pilling: 5

Lightfastness: > 5

FR: Treatment available in narrow with and lamination BS5852 SOURCE 0&1 + CRIB 5 + EN1021 SOURCE 1&2 + IMO8.

USE



WASHING CONDITIONS

